



The Mineralogical Society of Victoria
Incorporated
A0001471E

Newsletter No. 207

October 2010



Epidote & Quartz, Howitt Plains area, Vic
6mm field of view

Print Post Approved PP332785/0015

The Mineralogical Society of Victoria Inc.
P.O. Box 12162
A'Beckett Street
Melbourne Vic. 8006

Patron: Professor Ian Plimer FTSE, Hon FGS, FAIG, Hon SGA, BSc(Hons), PhD

Office Bearers:

President:	Alex Blount	General Programs:	Dermot Henry
Vice President:	TBA	Special Projects:	Dermot Henry
Secretary:	Lia Bronstijn	Resources (incl Library):	TBA
Treasurer:	John Bosworth	Publicity	TBA
Excursions:	John Haupt	Committee Persons:	Jo Price John Haupt Bill Birch

Newsletter: Editor & Layout: Michael Hirst
Assembly and Circulation: John Haupt

Contact Numbers: Excursions: TBA
Micro-mineral Group: Jo Price (03) 54 284 762
Mineral Appreciation Group: Alex Blount 0407 879 097

Membership Details:

Joining Fee	\$5.00		
City Adult Member	\$25.00	Country Adult member	\$20.00
City Family membership (2 adults & children under 18)	\$35.00	Country Family Membership (2 adults & children under 18)	\$30.00
Student Member (full time)	\$15.00	Newsletter only	\$15.00

(N.B. - Country membership - more than 50 km from Melbourne G.P.O.)

Applications for membership can be obtained by writing to:-

The Secretary, Ms. Lia Bronstijn,
P.O. Box 12162,
A'Beckett Street,
Melbourne, Vic, 8006.

General meetings are held on the 2nd Monday of each month (except January) commencing at 8.00 pm at the Royal Society of Victoria, 8 Latrobe St. Melbourne.

Visitors are most welcome.

Newsletter of the Mineralogical Society of Victoria
P.O Box 12162 A'Beckett Street
Melbourne Victoria 8006 Australia

e-mail: ablount@pb.com.au

Internet: <http://www.minsocvic.websyte.com.au>

ISSN 0811-1855

© Not to be reproduced in part or full without written permission

© All photographs are the copyright of the individuals who submitted them



The Mineralogical Society of Victoria

Incorporated
A0001471E

Newsletter Number 207

October 2010

FORWARD DIARY

PLEASE NOTE:- General Meetings of the Society are now held on the second Monday of each month, 8:00pm at the Royal Society Building.

- Oct 11 General Meeting: Speaker – Dr Bill Birch Topic: The IMA meeting in Budapest and Bohemian pegmatites.
- Oct (Sun) Mineral Appreciation Group – No Meeting due to NDLC Exhibition. Topic: None
- Oct (Sun) Micro Group Meeting – No Micro Group Meeting for October. Topic: None.
- Nov 8 General Meeting: Speaker – To be confirmed Topic: To be confirmed
- Nov 21 Mineral Appreciation Group – At Nunawading Lapidary Club Rooms, Silver Grove, Nunawading. Topic: Fluorite + bring 1 example of each crystal system.
- Nov 28 Micro Group Meeting – At Judy Rowe’s home..Topic: Victorian zeolites not listed in the zeolite book.
- Dec 5 (Sun) End of Year BBQ, from 11:30am. Stanley Park, Waterfalls Road, Macedon – See map on Page 3 in Excursions section.
- Dec 13 General Meeting: Speaker – To be confirmed. Topic: To be confirmed.
- Dec Mineral Appreciation Group – No Meeting for December. Topic: None
- Dec Micro Group – No Meeting for December. Topic: None.

MINERAL RELATED EVENTS

- Oct 16-17 Nunawading & District Lapidary Club Exhibition. Blackburn High School.
Cnr Springfield & Williams Road, Blackburn North.

NEXT ISSUE

PLEASE NOTE:- Material for the December Newsletter to be with Michael Hirst by **November 25th**.

FROM THE COMMITTEE

As we approach the latter part of another year, improving weather means the chance to get out and scout around for collecting localities, or maybe just clearing out the boxes of old collected materials and having a look at what is there. As good productive collecting locations become scarce, it is good to remember that going over old material can often produce new and interesting finds as well. Many a new species has been found on existing specimens in old collections. And if you do find yourself with a box or two of unwanted material, why not bring it along to a Society meeting, or the annual BBQ as a swap/sell/give-away?



Speaking of the BBQ, we will again be returning to the bush setting of Macedon so we look forward to seeing as many people there as possible. Maps and details are provided in the excursions section below.

We welcome back Ivan Bishop to the Society. Ivan has previously been a member of the Society and has returned to continue his interest in the world of minerals.

With sadness we remember the recent loss of some of the pivotal figures in the Australian mineralogical societies in Ron Young and our own Bernie Day. Our condolences go out to both families and tributes to these gentlemen are provided below.

Alex Blount
President

Special thanks to Jon Mommers (www.earthstones.com.au) for providing the printing services and allowing us to present the Newsletter in colour.

SHORT TALKS

Below is the roster for member's Short Talks at the monthly General Meetings for the remainder of 2010. Remember that the talks only need to run for around 5 minutes or so (10 minutes maximum please) and can cover any topic of a 'mineralogical' nature. And if anyone would like assistance with putting together a 'Powerpoint' computer slideshow, please let a Committee member know.

DATE	SPEAKER
Mon 11 October	Pat Marley
Mon 8 November	Peter Hall
Mon 13 December	Jo Price
Mon 14 February	Judy Rowe
Mon 14 March	Volker Hoppe

EXCURSIONS

No collecting excursions are planned for the immediate future, pending the identification of suitable locations. As previously mentioned in this Newsletter and at Society Meetings, we rely on our Members to suggest new places to visit and let us know of any old favourites that you are keen to return to.

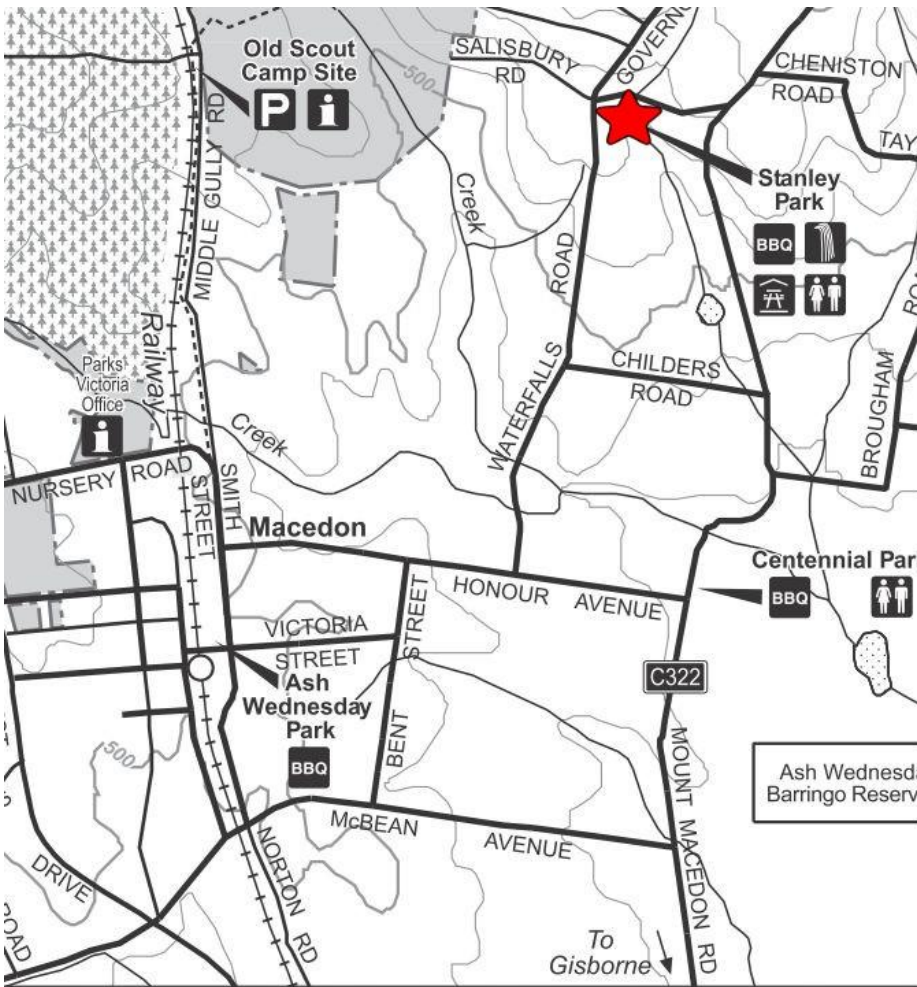


Forward Diary

End-of Year BBQ – Sun 5th December

For 2010 we will be returning to the 'bush', after several years in the suburbs. The venue for the end of year BBQ is Stanley Park in Macedon, Sunday 5th December, from around 11:30am. Whilst the park has plenty of trees for shade, toilets, BBQ and a shelter in case of rain, there may be other groups present, so please BYO seating, tables and anything else you might need for the day.

As usual we will be running a raffle for a couple of desirable specimens and there will be ample opportunity for swap-sell-giveaway of your excess minerals. A map of the venue is provided below.



**STANLEY PARK
WATERFALLS ROAD or
SALISBURY ROAD
MACEDON
VIC ROADS: MAP 285 R8**



MUSEUM FUND

As hopefully members will know by now, the Society is selling a selection of mineral specimens donated by Ian Strachan. The proceeds from the sale are being held in the Societies museum fund, which is made available to the assist Museum Victoria in the purchase of specimens for their collection.

A selection of the material for sale will be presented at each General Meeting, and localities that will be appearing in the next few months will include: Australia, United Kingdom, India and possibly Namibia..

PUBLICITY

Micro Group Report

Our August topic, minerals with strontium or zirconium, gave us a good variety of minerals from all over the world including just a few sites where we have collected.



Amongst zirconium minerals zircons were by far the most numerous, and from many different places, although the type locality for zircon is unknown. Victorian zircons were from Amphitheatre, the Anakies, Batesford, Lake Bullenmerri, Carapooee, and Mt. Cole, while other Australian sites were Mannum, S.A., Glen Innes, N.S.W., and the Harts Range, N.T. Then there were zircons from Greenland, Brazil, the Francon Quarry and Mt. St. Hilaire, Canada, the Kola Peninsula, Russia, North Carolina U.S.A, and the Eifel Mountains, Germany. Some other zirconium minerals included baddleyite and painite, Myanmar; catapleite, hilairite and elpidite, Mt. St. Hilaire, Canada; wadeite from the Walgidee Hills, WA; and selwynite, Wycheproof.

Strontium minerals included strontianite from the type locality, Strontian, Scotland, from Solothurn, Switzerland, and Pennsylvania, U.S.A.; brewsterite-Sr, from the type locality, Strontian, Scotland; celestine, from Madagascar, Girgenti, Italy, Bristol, U.K., Dundas, Ontario, Canada, and Winterswyk, Holland; and goedkenite from the Palermo Mine, New Hampshire, U.S.A.

A mineral containing both Sr and Zr is weloganite, from the Francon Quarry, Canada.

The Group welcomes new members. Our meetings are informal and tea, coffee and cake are provided. It's only necessary to bring your lunch, microscope and any minerals you may have for the day's topic.

No minerals? No problem – come anyway as many minerals will be tabled for all to see, but if you haven't attended one of these meetings before, do let the host of the day know you are coming so that there will be enough seats for everyone.

Mineral Appreciation Group Report

Intending to conclude the crystal systems and with only one group remaining, the topic for August was originally 'amorphous minerals'. Upon reflection, this was felt to be rather limited and the topic was expanded to include '...and best example of each crystal system'. Unfortunately, the coordinator of the meetings managed to get his dates confused and the topic will be re-scheduled in November. Sincere apologies to those who were left waiting out in the cold!

In September the group met to consider the epidote and axinite groups. The groups were chosen randomly and no particular connection was expected. However, we discovered that a new mineral species of epidote-(Sr) had recently been described which occurs in manganese deposits in Japan, within veins of tinzenite – an axinite group mineral species.

PHOTO: axinite-(Fe), Bourg d'Oisans, Isere, France.

From the smaller of the two groups, axinite with only 4



member species, we saw a variety of good examples of axinite-(Fe) from the well-known Tasmanian locality at Colebrook Hill and from the type locality for axinite-(Fe) at Isere, France.

The larger of the two groups, epidote with at least 21 members, allowed us to see an interesting variety of the under-appreciated epidote itself with examples ranging in colour from visibly black, transparent lustrous brown, through shades of greens to pale yellow with a slight green tinge.

Specimens were presented from a wide assortment of locations worldwide including dark green masses from Minas Gerais in Brazil and from Argentina; crystalline masses and single crystal examples from Harts Range, NT; small green crystals from Dookie, Vic; glassy yellow-brown parallel crystals from Knappenwand, Austria; small glassy green crystals on quartz from various locations in Sichuan Province, China; olive-green to brown glassy parallel crystals labeled as being from the Hunza Valley, Pakistan, but more likely to be from the Skardu District; and some small clear golden yellow crystals with andradite from Namibia.



PHOTO: epidote, Knappenwand, Austria.

Of the other members of the epidote group, we saw examples of coarsely crystalline and individual crystals of piemontite from the Olary district, SA; allanite-(Ce) from Mary Kathleen Mine, Qld; allanite-(?) from the Mount Cole granite, Vic and Nulla Vale, Cobaw Granite, Vic; and clinozoisite from Afghanistan.

Members attending this group enjoy looking through their collection for specimens to bring along and to learn more about their characteristics and mode of occurrence. The group highly encourages more Society members come along to these meetings to see an every-changing variety of different minerals on display.

The meetings are an open show and discussion format and all society members are welcome to attend. Meetings typically aim for people to arrive around 10:00am for a 10:30am start, allowing time for people to unpack specimens. If you wish to attend, have any questions or have suggestions for topics you would like to see covered then please catch up with Alex Blount.

RESOURCES, NEW PUBLICATIONS & REFERENCES OF INTEREST

If any Society members become aware of new publications relevant to mineralogy or existing items that they feel would be of benefit to members, please feel free to let a committee member know. Where appropriate, the Society can look to obtain copies for inclusion within the library.

New journals, publications and newsletters received include:

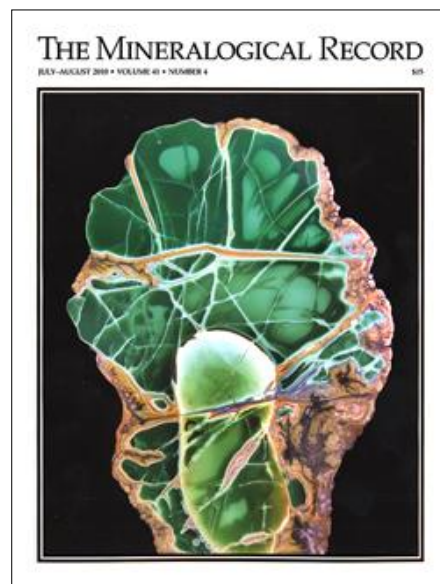
The Mineralogical Record – Jul-Aug 2010

The Clay Canyon variscite mine, Fairfield, Utah

The Blackbird mine, Lemhi County, Idaho

The Weisseck Summit Cleft, Lungau, Slazburg, Austria

The Australian Journal of Mineralogy, Vol 15 No1+2.



Rocks & Minerals – Jul-Aug 2010

The Pewabic Copper-bearing Amygdaloidal Lode, Houghton County, Michigan, Lake Superior Native Copper District

Flying Jewels: A Celebration of Colour and Pattern in the Mineral and Insect Kingdoms

Copper Mining in Calumet: The Artist and Mural

Collectors Guide to the Chlorite Group

Ordinary Specimens Matter: The Canning Gold Collection

Exploration and Mining History of the de Linde Wavellite Mine, East Dug Hill Area, Near Avant, Garland County, Arkansas

Word to the Wise: Materials Mineralogy

Through the ‘Scope: The Year in Micromounting – 2009 Was a Year of Disturbance

Francis, G. A. (2010): Minerals of Iron Monarch. OneSteel, Whyalla, Australia, 165 pp.

A new publication, the Society will be looking to purchase a number of these books to sell on to members. Further details to follow.

The library is open for borrowing at every monthly meeting – so why not check it out next time.

The library shelves are now in approximate order. There are lots of fascinating books on mineralogy and related topics, just waiting for members to borrow and enjoy them – so, happy hunting and good reading!

SOCIETY MICRO-MINERAL COLLECTIONS

Broken Hill Collection – Alex Blount

Iron Monarch Collection – Alex Blount

Victorian Collection – Alex Blount

Western Australia – Alex Blount **NEW!**

The collections currently contain over 600 micro-mineral specimens from their respective regions. We are always looking for new donations of specimens (preferably mounted but not essential), especially from new or recent finds, but updates or multiples of existing species are also appreciated.

The collections are available to all members to borrow on a monthly basis and they provide an excellent way to compare your own material from field-trips with ‘already identified’ reference specimens. If anyone wishes to borrow the collections or peruse a copy of the catalogue, please catch up with the curators listed above.

WANTED

Mineralogical Record Back Issues Vol 2 No 2 & Vol 2 No 5 for the **MinSoc Library**.

Please contact any committee member if you can assist with these.

FIELD NATURALISTS CLUB OF VICTORIA *GEOLOGY SPECIAL INTEREST GROUP*

Meetings take place at 8pm at the FNCV Clubrooms at 1 Gardenia Street, Blackburn, 3130 (Melway 47 K10) Further information on the talks and excursions is available from Clem Earp 9885 1548 AH or Noel Schleiger 9435 8408 AH.



Details of field trips appear in the issue of the *Field Nat News* published the month before the date of the excursion. As a voluntary organisation funded entirely by our members’ subscriptions, we

welcome visitors but there is a charge of \$2 per non-member for each meeting and \$5 per excursion attended to help cover our costs. Members of affiliated clubs pay \$2.50 for excursions.

Membership: Joint/Family \$85, Single \$65, Concession \$50, Student \$25. Further details from FNCV Office 9877 9860.

GEOLOGY CALENDAR

THE MINSOC TRADING POST

Society members can submit brief descriptions of specimens, equipment or other mineral related items that they wish to sell, swap or give away.

At General Meetings there are often some minerals for sale after the meeting.

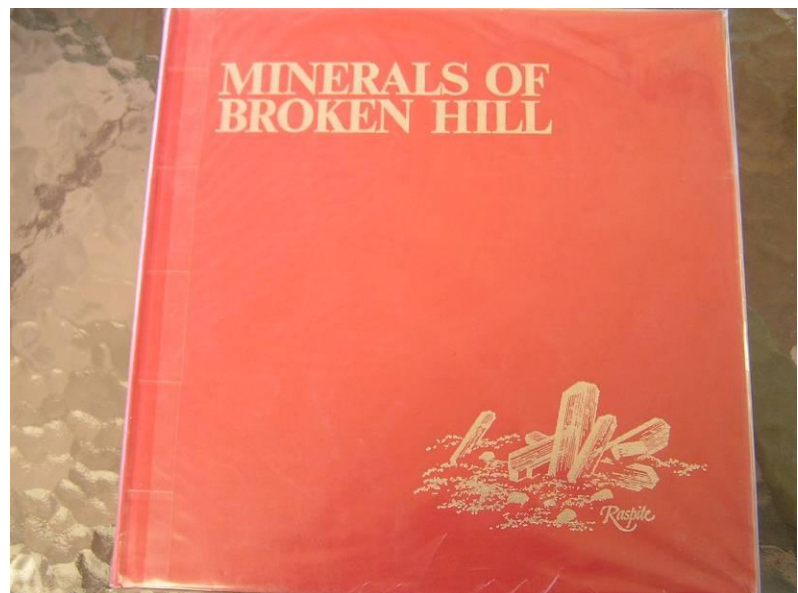
This is open to all – feel free to bring your minerals along.

For Sale

Minerals of Broken Hill

Very good condition, but no dust cover.
Price \$230.00 plus P&H

Contact: Neil Smith at
neilandyvonne@hotmail.net.au



Obituary Bernard Ernest (Bernie) Day 13-11-1927 9-9-2010

The Australian mineralogical community will be saddened by the recent death of Bernie Day. He was a well known mineral collector and will be remembered by many for his friendly jovial personality and willingness to share his knowledge.

Born in Brighton, he grew up in Shepparton and attended the high school, where he was a hard working student, being Prefect for 3 years and Sports House Captain. He was a keen sportsman and avid tennis player and was a linesperson and umpire at the Kooyong tennis club. Upon matriculating, he went to Melbourne and started work at the Ammunition factory at Deer Park. He liked chemistry and left to join the Commonwealth Serum Laboratories (CSL) as a cadet biochemist and later became a biochemist. Here he met the love of his life, a dashing attractive brunette, Margaret. She had trained as a chemistry teacher, but joined CSL, where she was assigned as an assistant to the biochemist – Bernie Day. It was chemistry at first sight!! They married in December 1954 and had 4 children - Ian, Peter, Malcolm and Cathy.



Keen to continue his education, he completed an applied science course at RMIT and later management training. He became a chemist at Swallows Ice Cream and later assistant production manager at Peters Ice Cream. It was here that he came up with the idea of dipping two sticks of ice cream into melted chocolate, thus creating their famous two in one product. He later moved to Home Pride Bakeries and became production manager of their Clayton factory. Further promotions led to group quality manager and group production controller, where he created 'Osloaf', 'Country Split' and hamburger rolls for McDonalds. During this time they moved into their much loved family home in Blackburn South. He retired in 1989.

Bernie was a family man and always keen to take the family away on holidays. An early outing to Buchan led to the purchase of a caravan, which was much used on family holidays. Buchan also kindled their interest in rocks, with the family's holidays now visiting old mines, quarries, river beds and paddocks to fossick for gemstones. In 1969, the family joined the Nunawading & District Lapidary Club and Bernie became actively involved in both cutting and polishing and club administration. He was President in 1976 & 1977 and was made life member in 1978. By the mid 1970's, minerals had become Bernie's great passion. It was more than just a pastime as he became involved to the fullest in all the activities and organisations related to mineralogy in Australia. Bernie & Margaret were regular attendees at Gemkhanas, Gemborees and Mineralogical Societies seminars, where they were frequently sought out for their mineral knowledge. Their Melbourne home also welcomed overseas and interstate visitors.

Bernie and Margaret were foundation members of the Mineralogical Society of Victoria. Bernie made an outstanding contribution to the Mineralogical Society. He served on the committee for 13 years, between 1986 and 2001, being President from 1994 to 1996 and Secretary from 1996 to 2000. He contributed to the Society's special publications on zeolites and phosphate minerals and was an enthusiastic and skilful member of the photographic group, contributing many photos to the albums on Victorian minerals, as well as on Broken Hill. Bernie gave a number of talks at the Society's monthly meetings and ran several identification nights. He also prepared and conducted education programs for the newer members. He was a member of the working group that established the Australian Journal of Mineralogy. As an acknowledgement of his outstanding contribution to the Society he was made a life member in 2006.

Bernie was a keen field collector and with Margaret he travelled the width and breadth of Australia seeking out gemstones and minerals from obscure mines. One of their favourite places was the Mt Isa-Cloncurry region in Queensland, where they collected many uncommon minerals and contributed articles to the Australian Journal of Mineralogy. Broken Hill became their 'second home' for many years. Bernie also had a keen interest in English minerals, particularly from Cornwall and made several visits there in his retirement. He considered the mining village of St Day to be his ancestral home.



Vale Bernie mate.

John Haupt

VALE – RON YOUNG

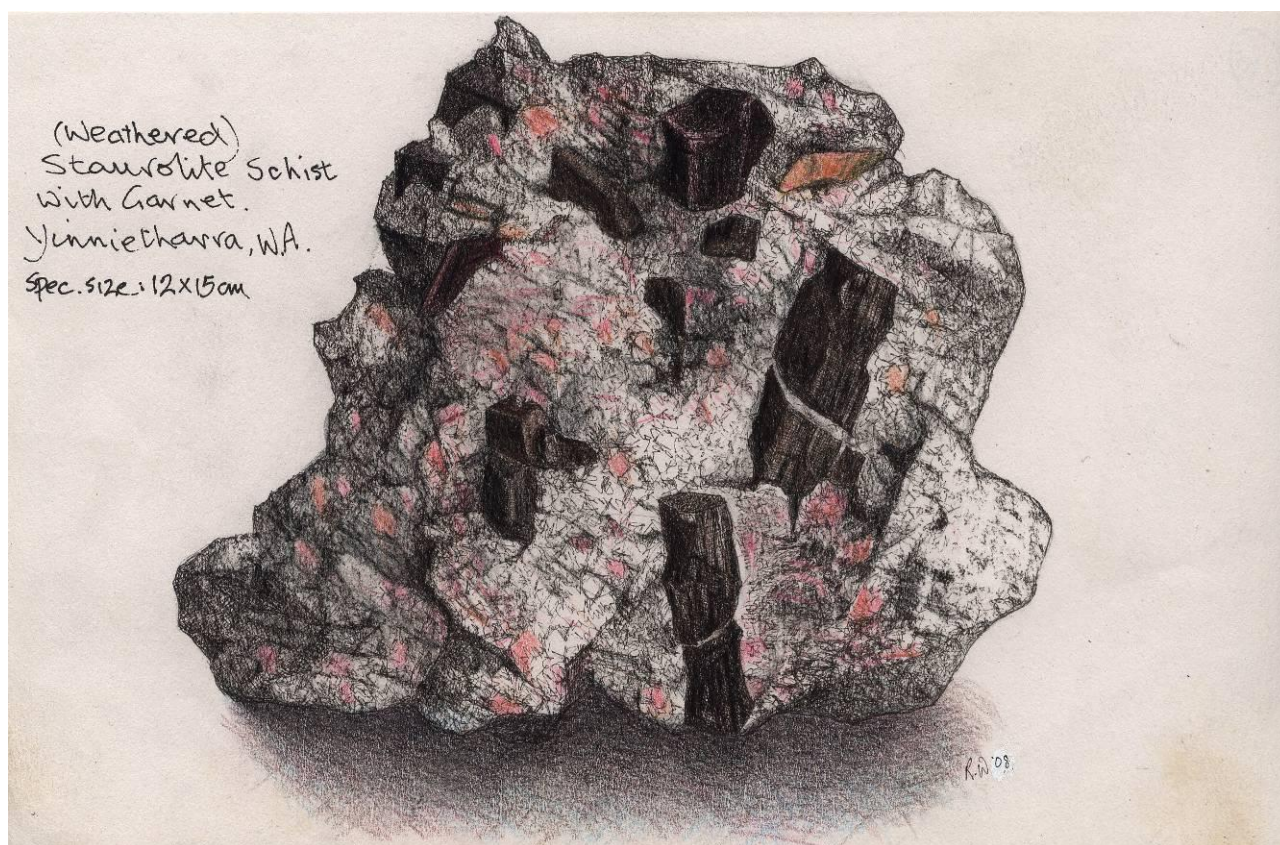
At Jacki's request, it is with great sadness that we inform you that Ron Young passed away at 12.05 am Tuesday, August 10th morning, at St Vincent's Hospital, Kangaroo Point. Ron had spent a beautiful and serene last day, surrounded by Jacki, his daughters and friends, with his favourite Beethoven piano concerto playing in the background.

Ron had been president of MinSocQ for nine years, and has been vice-president all the years thereafter. Ron was well known to mineral collectors throughout Australia.

As we all know, Ron was a truly wonderful, caring and unselfish person, full of enthusiasm for the things and people near and dear to him. It is a measure of the man that over the last year, and especially in his last few weeks, Ron was concerned for his friends and relatives, the Minerals Heritage Museum and MinSocQ, with no complaints or bitterness at the hand that fate had dealt him. We of MinSocQ mourn his passing; we will miss him, but we will remember him forever.

We extend our heartfelt condolences to Jacki and to Ron's family.

Steve Dobos



Pencil and watercolour sketch
By Richard Wright ©

Many thanks to Richard Wright for offering his sketchbook to the Editor to copy, and providing permission to use his sketches in the Mineralogical Society of Victoria Newsletter.

SOME MINES AND MINERALS OF EASTERN VICTORIA

Part 3

by John Haupt

The Deddick Silver-Lead Field

The presence of silver-lead minerals at Deddick was first noted in the early 1870s. A.W. Howitt, the mining warden at Omeo, was the first geologist to visit the field, but considered the deposit to be uneconomic. In 1897 the Jingallala Prospecting Association pegged some leases and were quickly followed by a number of companies and syndicates. Several government geologists visited the area and reported on the lodes that had been opened up. (Lidgey (1896), Stirling (1898), Ferguson (1899) & Jenkins (1899)). In 1907, E.J. Dunn, the Director of the Geological Survey, also visited the area and reported on the deposit, stating that “there is promise of much mineral wealth in this portion of Gippsland”. The deposits were originally called the Mt Deddick silver-lead field, but were later known as the Snowy River silver-lead lodes. During his visit in 1899, W.H. Ferguson, took photographs of the area on glass plates and I have included several of these photographs.

Most of the lodes are on the eastern side of the Snowy River, some 3 km downstream of McKillops Bridge. Several prospects were also opened on the Western side of the river, the largest being the Begelhole mine. Small quantities of ore were raised from several of the mines, but the high cost of carting the ore to the coast, without any formed roads, would have exceeded any income from their sale.

The deposits are located within the Deddick Granite. The lodes were formed by hydrothermal fluids circulating through fracture zones in the granite. A set of reefs extend in a north-westerly direction for 1.5 km. Most lodes were 1 m or less wide, with the largest ore shoot of galena 18 m long. Galena and quartz are the main lode minerals, with lesser barite, calcite, sphalerite, pyrite, chalcopryrite and arsenopyrite. The silver is contained within the galena, with no silver minerals being separately identified. The depth of oxidation was shallow, with small amounts of cerussite and anglesite occurring.

A visit to the mines in the mid 1980s revealed scattered workings along the ridge leading up from the river, consisting of a number of shafts and adits. The dumps yielded an occasional specimen of galena ore, with some containing small crystals of cerussite and anglesite. The dump material at the Begelhole lode contained a mixture of pyrite, chalcopryrite and galena, with evidence of copper staining of malachite and azurite, differing from the silver-lead deposits on the other side of the river.

References:

Cochrane, G.W., 1982: Copper, Lead, Zinc and Barium Deposits of Victoria. *Bulletin of the Geological Survey of Victoria*, 61, 150-153.

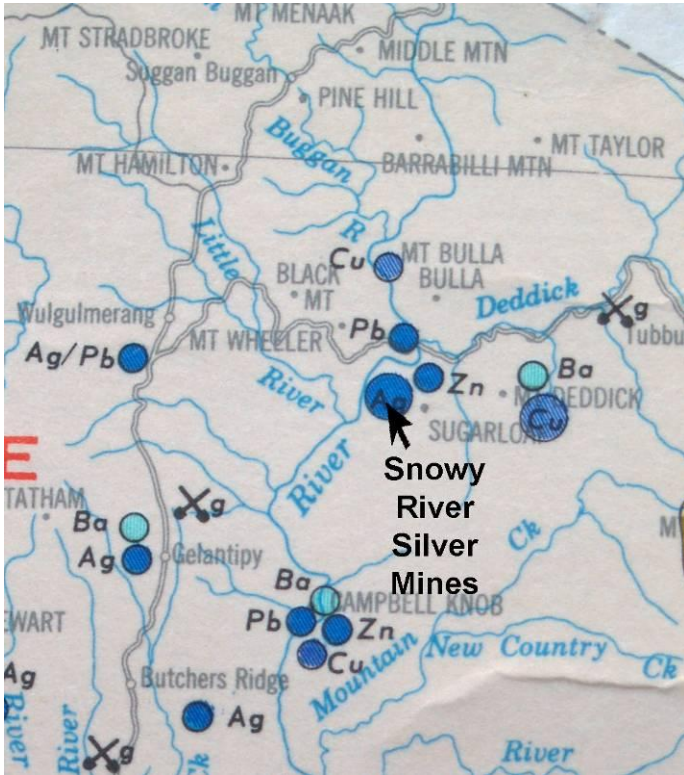
Dunn., E.J., 1909: Mt Deddick and Accommodation Creek, East Gippsland. *Records of the Geological Survey of Victoria*, 3 (1), 75-78.

Ferguson, W.H., 1899: The geological survey of the Mt Deddick district. *Monograph Progress Report of the Geological Survey of Victoria*, 4-5, 9-14.

Haupt, L., 1981: Some mines of East Gippsland. *The Mineralogical Society of Victoria, Newsletter*. 91, 6-12.

Jenkins., H.C., 1899: Report on the Mt Deddick Field. *Monograph Progress Report of the Geological Survey of Victoria*, 4-5, 14-18.

Stirling, J., 1899: Preliminary Report on Mt Deddick Silver Lead Field. *Monograph Progress Report of the Geological Survey of Victoria*, 4-5, 5-7.



Locality map of the Mt Deddick (Snowy River) Silver Lead deposits.

Below:
Early photographs of the Snowy River silver-lead workings. Taken by W.H. Ferguson in 1899.

Pictures Collection, State Library of Victoria.





Above: View of the Snowy River showing McKillops bridge, taken from a lookout on the Deddick trail.

Right: View of the ridge with the silver-lead workings.

Below: McKillops Bridge, Snowy River.

Photos: J. Haupt





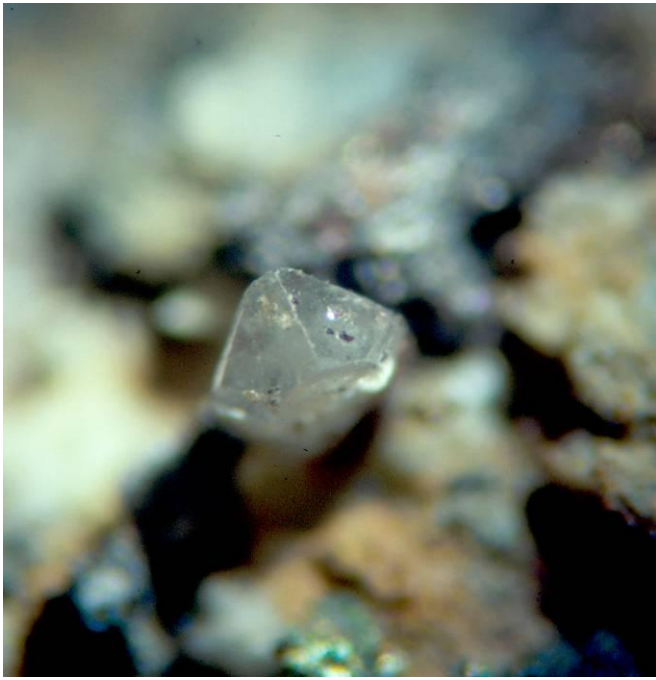
Above: Remains of a miners hut dug into the hillside.

Other Photographs show the remains of the silver mine workings.

Photographed in the 1980s.

Photos: J. Haupt.





Above left & right: Cerussite crystals. 3mm FOV.

Below: Galena vein.



Above: Anglesite, 1mm crystal.

Below left: Cerussite crystal, 2mm tall.

Below right: Siderite and chalcopryite from the Begelhole lode. 4mm FOV.

