

# *Mineralogica Tasmanica*



**THE MINERALOGICAL SOCIETY OF TASMANIA  
JOURNAL & NEWSLETTER  
NO. 72, FEBRUARY 2010**

## **CONTENTS**

---

<b>Program / Events</b>	<b>3</b>
<b>President's Report</b>	<b>3</b>
<b>MST Library</b>	<b>4</b>
<b>TLMA News</b>	<b>5</b>
<b>Xmas function</b>	<b>5</b>
<b>Trip to Rossarden and Weld River (February Long Weekend)</b>	<b>7</b>
<b>T.L.M.A. Field Trips 2010</b>	<b>9</b>
<b>Turquoise</b>	<b>11</b>
<b>Gemboree 2010</b>	<b>12</b>
<b>Murphy's Laws of Minerals</b>	<b>14</b>

# ***THE MINERALOGICAL SOCIETY OF TASMANIA:***

**President & Editor:** Ralph Bottrill Email: [rbottrill@mrt.tas.gov.au](mailto:rbottrill@mrt.tas.gov.au)  
(03) 6267 1014 (home); (03) 6233 8359 (wk.); fax: (03) 6233 8338

**Treasurer** Marnie Pope (03) 62442023 Email: [pope00@ozemail.com.au](mailto:pope00@ozemail.com.au)

**Secretary** Marnie Pope (03) 62442023 Email: [pope00@ozemail.com.au](mailto:pope00@ozemail.com.au)

**Field Trips Officer:** Brett Chandler: [bjrc@westnet.com.au](mailto:bjrc@westnet.com.au)

**Librarian** Brett Chandler: [bjrc@westnet.com.au](mailto:bjrc@westnet.com.au)

**Vice-President:** Steve Sorrell: (0419) 369 483 (mob.) email: [steve@crocoite.com](mailto:steve@crocoite.com)

**All correspondence to:** **P.O. Box 1111, Rosny Park, Tas., 7018**

**Meetings** Are held on the second Friday of each month at 7.00pm, in the first year lecture theatre, Geology Dept., University of Tasmania, Sandy Bay. Visitors are most welcome.

**Membership fees** \$15: single, \$20: family (includes 4 newsletters/yr)

**Patron:** Professor Ross Large, University of Tasmania

**Website:** <http://www.mineral.org.au/socs/taspg001.html>

**ABN:** 49 582 252 658

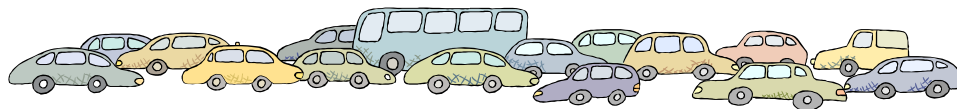
*The Mineralogical Society of Tasmania is a member body of the  
Tasmanian Lapidary and Mineral Association Incorporated.*



*Mimetite, Adelaide mine, Dundas.  
Ralph Bottrill specimen and photo. FOV 20mm.*

## PROGRAM / EVENTS

---



12<sup>th</sup> February 2010 : Swap and Sell and Mineral identification night,

12<sup>th</sup> March 2010 : Meeting (TBA),

March trip: TBA

[Gemboree 2010, Devonport \(2<sup>nd</sup> – 5<sup>th</sup> April 2010\)](#) (see p. 12)

9<sup>th</sup> April 2010 : No Meeting (Exhibition prep.)

[Gem and Mineral Exhibition - Hobart, 10th-11th April 2010](#) (see p. 13)

14<sup>th</sup> May 2010 Quiz night

*TLMA programs: see p. 5*

*Italicized items are non-MST events: ask Ralph for contacts.*

Nb: Most trips are tentative dates. PLEASE CONFIRM field trip details and your attendance, at least two days in advance, with a nominated **Field Trips Officer** or contact the president.

## PRESIDENT'S REPORT

---

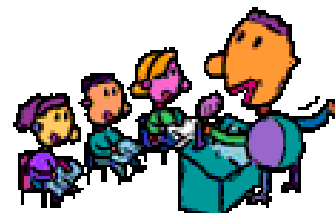
### Recent MST affairs

On the 13<sup>th</sup> November the meeting held a Zeehan show and tell on our treasures.

On the 22<sup>nd</sup> November we held our Xmas function (see p. 5)

On 6-8<sup>th</sup> February we had a 2-day field trip to the Northeast (report on p. 6).

We will have a busy April with the Gemboree and Exhibition, so **can we please have some volunteers** for both (please contact me or Marnie). .A big.thanks to Mike Jagoe for his donation of mineral specimens towards the lucky dip (\$200.00 worth!)



## MST LIBRARY

Interesting articles in journals recently received include:

*Micronews (Canada)* 43 (6): Aris, Namibia, 44 (1) Mt St Hilaire

*Microscope (NZ)*: Dec 2009: Awaruite, Uncertainty

*NWTMC* (Jan 2010): Displays

*Mineralogical Society of Vic Newsletter*

Dec '09 Cornwall, England

Feb '10: Rare earth minerals

*Broken Hill* December 2009: Collecting

*Mineralogical Society of WA Newsletter* Jan 2010: Northampton trip

*Mineralogical Society of NSW Newsletter* August 2009-Jan 2010: Pharmacosiderite, Photography, Alabandite,

Many interesting articles occur in these newsletters; please don't hesitate to ask to borrow these, or any of our books. We also hold many mineral-related books and some videos and CD-ROMs. A catalogue is available from Michael Pope ( [pope00@ozemail.com.au](mailto:pope00@ozemail.com.au), ph 03 62442023), who also curates a photo album for the Society; all relevant donations (eg. from field trips) are most welcome (electronic or hard-copy, but please add some details). .



## ANZ Mineral Collector magazine

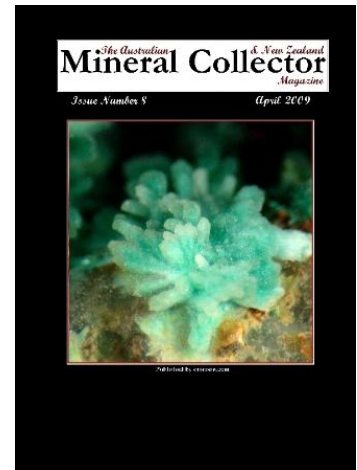
Issue 9 contains articles on Broken Hill gahnite, Harts Range kyanite, field trips to Namibia and Madagascar and more. It is full colour, and 28 pages.

New pricing structure: This issue is the first that provides a number of options.

The first is to order directly through Lulu in the same way as in the past. High quality printing and a cost of \$US12.50 plus postage: See: <http://www.lulu.com/smartarts>.

The second option is through a printing facility in Melbourne, Australia. The quality is still good, but not quite as high as Lulu. The benefit, particularly for Australian and New Zealand subscribers, is the lower cost which is \$AU12.50 post paid in Australia, and \$AU15.00 post paid to New Zealand. To take up this option, orders will need to come through Steve Sorell: [steve@crocoite.com](mailto:steve@crocoite.com).

The third option is an electronic one. Each issue can be downloaded directly from Lulu. Cost for this option is \$US5.00.



# TLMA NEWS

---

---

## Tasmanian Lapidary & Mineral Association Inc.



The latest TLMA meeting was in Launceston on 5/12/09; the main issues are summarised here.

- The next Tasmanian Gemboree (Easter 2010) in Devonport is in prep., and volunteers will be needed. The co-ordinator is Pam Carter, 91 Gravelly Beach Rd, Blackwall, 7275, ph 0409 372 858, Email: [carternnap@bigpond.com.au](mailto:carternnap@bigpond.com.au)
- More information is requested for our website: <http://www.tasmanianlapidary.org.au>

The next TLMA meeting will be held in Launceston on 27/2/10: please contact us or come along you are interested in helping with the Gemboree or any other matters.

---

---

## XMAS FUNCTION

**M Pope & R Bottrill**

Photos by Mike Jagoe and Michael Pope.

### **Mineralogical Society of Tasmania - Xmas BBQ held Sunday 22nd November, 2009.**

This was held at the picnic grounds at New Norfolk. Tony Joyce had booked the BBQ site for midday, and was there for our arrival, but unfortunately was sporting a bandaged hand. It appears during free time in the morning he had been cracking open fossilized rocks and his large hammer had got his finger instead. Tony was on his way to the hospital in Hobart to get it seen to – x-rayed and stitched.

Enjoying the day there were Mike J, Ralph, John N, Brett, Andrea, Kathy, Dehne and Maureen, Steve and Dianne, Roz and Connor, Colin and Bianca, Barry, Marnie and Michael. As most of the group turned up steady drizzle set in, but it didn't dampen our BBQ-ing (we had good shelter). Mike J. had gone to a lot of trouble in making sweets – including a cream covered delicacy with the words “ Merry Xmas MinSoc ” spelt out in cantaloupe around the top, he had also made a plate of fruit mince pies, all of which were very much enjoyed, - many thanks.

Around 2 pm just as the drizzle stopped we headed for Tony's shop “The Big Tasmanian Rock Shop’ hoping he was back from the city, but as he wasn't we spent time next door in the Tip Shop where many bargains were found. We then spent the next hour or so examining the many usual and unusual rocks, minerals, fossils, etc in Tony's shop and storerooms with the difficult job of deciding what to take home.

This was followed by a quick scoot about the local area for fossils (i.e. minerals replacing organic matter!). These are often overlooked by us, but some wonderful brachiopods, bryzoans, corals, gastropods and fossils can be readily found, some as casts and some filled with calcite.

Thanks to Tony for a different, but interesting type of Xmas BBQ.



**Pictures from the BBQ and Big Rock shop**

# TRIP TO ROSSARDEN AND WELD RIVER (FEBRUARY LONG WEEKEND)

---

. Mike Jagoe

A small party of members turned out at Avoca on Saturday 6th Feb. The group consisted of Brett & Lachlan Chandler, Mike Jagoe, Susie and Andrea Lewis and family. The weather was perfect and the group set off on time for the first destination the Aberfoyle Tin Mine at Rossarden. A short detour was made to inspect the old workings of the Stanhope Coal Mine. The mine, on private property has been closed for a while, some of the old plant was investigated but unfortunately no material of any real geological interest was found. No fossil material - except old weather coal. Only one member (visitor) found the area wonderful - Susie lots of nice big muddy puddles!

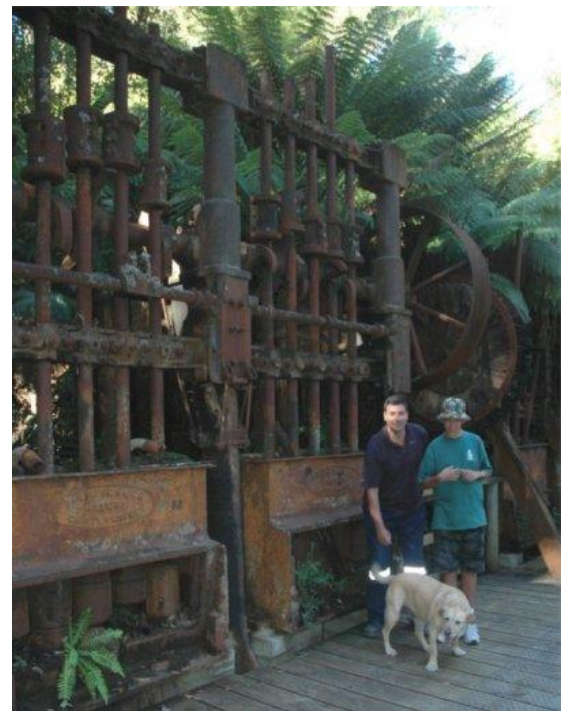


We then moved on to the Aberfoyle Tin Mine dump. The area proved disappointing as little was discovered apart from a few very small cassiterite crystals and one nice terminated milky quartz crystal about 50mm long unearthed by the youngest member Lachlan that must be regarded as the 'find of the day'. The excellent weather and the dominating panorama of a crystal clear Ben Lomond and Stacks Bluff made up for the minimal finds. Both mines were 'interesting' and can be tucked away onto everyone's 'been there done that' list

## **A Little History.**

Small scale mining was occurring at Storeys Creek as far back as 1882. With the discovery of wolfram major mining started around 1916. Mining at Rossarden went from 1931 to 1982, at its peak there were 150 underground miners working; the main shaft extended down 408 feet. The main minerals at both mines were Cassiterite, Wolframite and some Sphalerite var. Marmatite. Large gem quality cassiterite with a wonderful adamantine lustre were common at both mines along with large wedge shaped wolfram specimens.

On leaving the Lewis family returned to Hobart and the Chandlers Susie and myself headed for the Anchor Tin Mine workings.



The main attraction at the Anchor mine was the partly preserved five by four large stamper units that can now be reached by a recently constructed tourist access track put in by the Forestry Dept. A little bit of excitement occurred when Susie spotted her first medium size black with yellow striped tiger snake. Fortunately, and much to my relief, she treated it with a great deal of respect (for Susie). The stampers and accompanying information on the mine proved of interest to all (humans).

### More History

The Anchor mine was operating as early as the late 1800's as were many other small tin mines in the Lottah and general N.E. Tas areas. The mine boasted a massive 20 meter diameter water wheel (see photo.) and extracted some 3000 tons of tin concentrate between 1892 and 1930. Excellent information on the area can be seen at the History Museum in St Helens along with a wonderful working model of the water wheel and stampers.



**Anchor Water Wheel**

After visiting the stampers and main mine tailing dump I persuaded Brett and Lachlan to camp at Poimena near the top of Blue Tear, this is the site of the old Tin Mining township of Poimena. The St. Helens Historical Society with the aid of the Forestry Dept. have done a wonderful job of putting tracks and signs to all the old mines and marking all the old mining equipment that is still withstanding the rigors of time. I have a very pleasant night in my A van but I don't think I can say the same for both Chandlers in their tent. The wind proved to be a bit challenging for them and sleep seemed to be a little elusive!

The next morning we set off for the meeting point at the Weld River arriving at 10 am weather again perfect. At this stage I left the group and they continued on the sapphire 'dig'. Brett continues:-

On Sunday we fossicked at the Weld River, and we all found a reasonable amount sapphire, zircon & topaz (a few cutters amongst them). The weather was great and the water was tepid. Attendees were; Brett & Lachlan Chandler, Laurie & Joanne Bourke and their children, Tomas and James. Neil Newman also joined us from the Devonport Lap Club.



**Stacks Bluff**

## Australian Journal Of Mineralogy

The latest issue of this great journal (14/2) is now out, with an article on Kolitschite (see below) and more . For more information see: <http://www.mineral.org.au/pubs/ajm.html> .We can show you copies on request and provide subscription forms (\$28/yr). The journal is a must-have for all Australian mineral collectors and mineralogists. It is of a similar standard to the Mineralogical Record, but the focus is on articles on Australian minerals and localities. Any contributions, advertising, suggestions can be directed through the editor Dermot Henry ([dhenry@museum.vic.gov.au](mailto:dhenry@museum.vic.gov.au)) or the president. The second Tasmanian issue is still in prep. Other upcoming issues are Gold (November 2008?) and possibly Gem minerals. Several back issues of the AJM are available from the society (via Ralph).





## T.L.M.A. FIELD TRIPS 2010

The trip leaders **MUST** be contacted with 2 days prior to the trip.

Please remember the T.L.M.A. Code of Ethics at all times.

Stone swaps can be held at field trips – check with trip leader.

<u>Date</u>	<u>Location</u>	<u>Information</u>	<u>Club</u>	<u>Leader</u>
Jan	NIL			
February 7	Deloraine	Pick & bucket. Fossils.	L.C.N.T.	Gavin Linger 63678143
March 6 & 7	Gladstone	Pick & Bucket. Quartz.	L.C.N.T.	Alistair Nichols 0437 565 263
April 2 – 5	Devonport	GEMBOREE	T.L.M.A.	
April 10 & 11	Wrest Point Casino, Hobart	Gem & Mineral Show	L.C.T.	Rosemary Aheimer 6249 1408
May 1 & 2	Campbell Town	Rock, Swap & Sell	L.C.N.T. L.C.T.	G.Linger 63678143 P.Sawyer 62633237
June 13	Flowery Gully	Pick, Safety gear. Calcite	NWTMC Ulverstone	Sam Caberica 6425 4340
July 11	Calder Penguin	Pick, bucket – Agate “ “ -Jasper	D.L.C.	Neil Newman 6427 0492
August 15	Mt. Bischoff	Safety gear Minerals	NWTMC	Sam Caberica 6425 4340
September 12	Moina	Safety gear Topaz, Quartz	D.L.C.	Neil Newman 6427 0492
October 10	Milton	Pick, Shovel Wood, Agate	L.C.T.	Sam Sawyer 6263 3237
November 6 & 7	Zeehan	Gem & Mineral Show		Kim Dunstan 6471 6553
November 14	Lune River	Pick, Shovel, Probe Agate, Wood, Fern	L.C.T.	Rod Hewer 6248 7669

**NOTE: Safety Gear = Hard Hat, Safety Glasses, High Visibility Vest,  
Steel Cap Boots, (Under 18 not allowed in working mines)**

**Remember ....No Safety Gear.....No Participation**

# A Catalogue of the Minerals of Tasmania

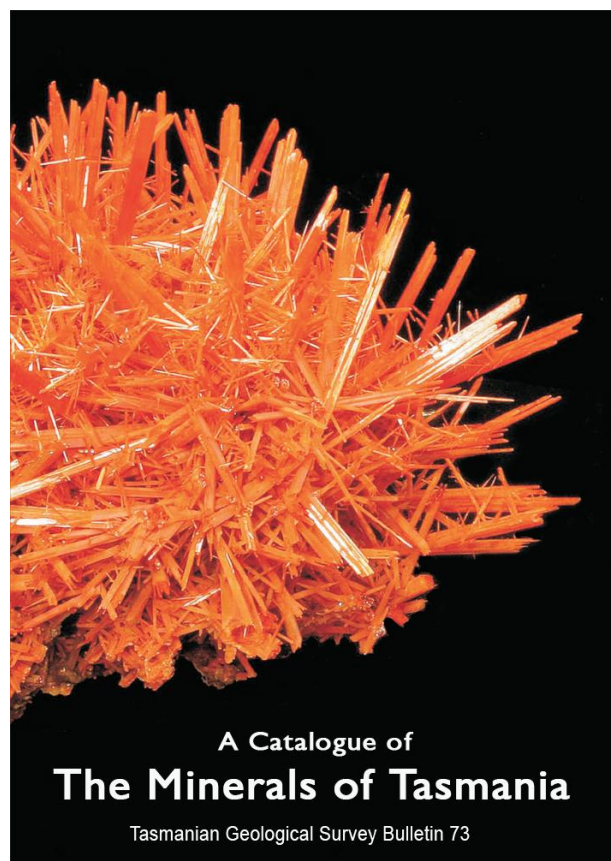
by R S Bottrill and W E Baker

Catalogues of the minerals found in Tasmania have been kept since almost the earliest days of mining and have been of invaluable assistance to prospectors, mineral explorers, mineralogists and collectors. The catalogue was first published by the Tasmania Department of Mines in 1910, and was extensively revised in 1969. Since then the improvements in technology and further investigations of minerals and mineral deposits have not only increased the number of identified species and data on mineral occurrences, but have also invalidated many previous 'species'.

The new Catalogue, published in late 2008, extensively updates the previous catalogue. A total of 753 minerals are described, comprising 483 confirmed species, 162 unconfirmed species, 72 variety or invalid names, and 36 series and group names. All entries in the 1969 catalogue have been re-evaluated and are now reclassified as to their known or likely validity.

Species invalidated or doubted from the 1969 listing have been retained, with comments. The new 254 page A4-size catalogue includes information on mineral occurrences and 314 colour photographs of Tasmanian mineral specimens. The soft-cover book has a recommended retail price of \$49.50 (including GST and post/packing). A very limited number of hard cover books are available only from MRT at \$75 (plus \$5 post/packing).

More info: see MRT Website:  
<http://www.mrt.tas.gov.au>



## How to get a copy

Copies can be purchased from Mineral Resources Tasmania:

### In person:

From our Rosny Park offices,  
30 Gordons Hill Road, Rosny Park

### By mail:

PO Box 56, Rosny Park, Tasmania 7018

### By phone:

(03) 6233 8377

### Email:

[info@mrt.tas.gov.au](mailto:info@mrt.tas.gov.au)

Some will also be available to collect in Hobart from the Mineralogical Society for a small discount – please contact Marnie ([pope00@ozemail.com.au](mailto:pope00@ozemail.com.au)).

*Cerussite, Magnet*

# TURQUOISE

(Excerpt from Baker & Bottrill, 2008: Catalogue of Minerals of Tasmania Mineral Resources Tasmania)

Turquoise ( $\text{CuAl}_6(\text{PO}_4)_4(\text{OH})_8 \cdot 4\text{H}_2\text{O}$ ) is a fine-grained cryptocrystalline massive or concretionary blue mineral, often found in weathered shaly rocks and copper deposits.

It was found at the old Australasian Slate quarry at Back Creek near Lefroy in 1963. The turquoise occurs associated with green wavellite and minor variscite as small ramifying veins up to 20 mm in thickness in the walls of an adit in the western side of the quarry. It encrusts the bedding and cleavage planes and

occasionally occupies vughs which yield masses up to

30 x 20 mm. The mineral appears to have been formed by the action of meteoric water which has derived copper from cupriferous, pyritic quartz veins and aluminium from the slate. The origin of the phosphate is not known, but the slates contain only 0.06 wt.%  $\text{P}_2\text{O}_5$  and the restricted occurrences of the turquoise suggests that the source is purely local (Sutherland, 1964b). An analysis of the turquoise is given in Baker (1969).

Turquoise also occurs in association with wavellite at the south end of the Den Ranges near Lefroy (Marshall, 1969; Anon, 1993)

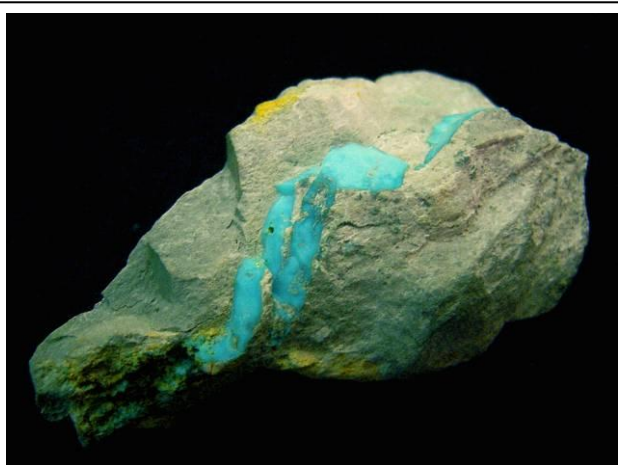
Blue to bluish green veins and scales up to 10 mm thick occur with wavellite in pyritic siltstones exposed in a quarry about 8 km south of Tayatea Bridge, near the Arthur River. It contains about 7.4 wt.%  $\text{Fe}_2\text{O}_3$ , indicating about 13 mol % chalcocite solid solution (Matthews, 1976).

It occur with gorceixite, variscite and illite as a pale blue-green coating on quartzite pebbles in Ordovician conglomerate in a quarry near Dunorlan, where it may grade into planerite (Latham, 2007)..

It was also reported from Savage River (Coleman (1975). Beaconsfield and Waddamanna (Mathews and Bottrill, 2006); copper minerals are found at Savage River but some Wadamanna “turquoise” was tested by XRD and found to be a smectite clay.



*Turquoise, Back Ck (A Tuma)*



*Turquoise, Arthur R*

# GEMBOREE 2010

The next Tasmanian Gemboree will be held over Easter 2010: 2<sup>nd</sup> – 5<sup>th</sup> April. The site will be in Devonport, northern Tasmania, Australia. This is the principal gem and mineral show in Australia, held every year in various parts of the country.

The co-ordinator for Gemboree 2010 is Pam Carter,  
Email: [carternnap@bigpond.com.au](mailto:carternnap@bigpond.com.au)  
91 Gravelly Beach Rd,  
Blackwall, 7275,  
ph 0409 372 858,  
[Gemboree Poster](#)



## Campsites

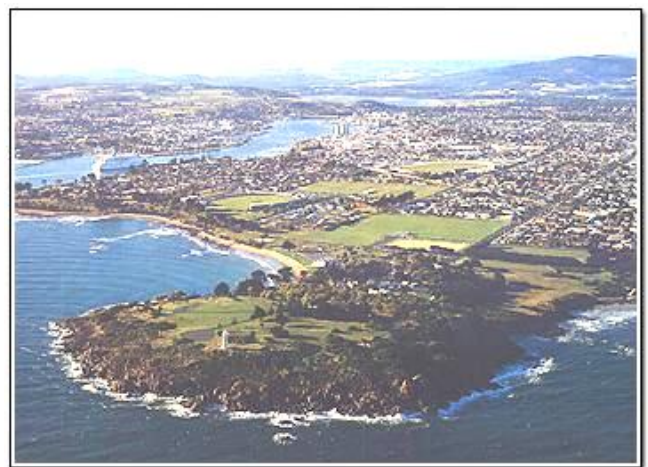
Please note that powered sites are not available at the Gemboree campground, but generators will be permitted.

[Campsite Registration.pdf](#)

## Fossicking

Some official trips will be organised over Easter ([Gemboree 2010 Field Trips form](#)).

Some designated [fossicking areas](#) in various parts of Tasmania will be available anytime, for gems and minerals. Anyone wishing to fossick in Tasmania, outside the designated fossicking areas, is advised to obtain a [Prospecting Licence](#) from Mineral Resources Tasmania.



Devonport, Tasmania

**For flights, boats or accommodation bookings** please contact:

Devonport Visitor Information Centre on 1800 649 514 and mention the Gemboree to staff.

## DOWNLOAD FORMS:

[Competition Entry form.pdf](#)

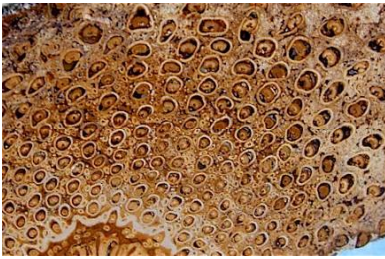
[Competition Schedule & Information.pdf](#)

[Gemboree 2010 Tailgating form.pdf](#)

[Gemboree 2010 Non-competitive display entry form.pdf](#)



**VOLUNTEERS needed! (contact Ralph or Marnie)**



# The Lapidary Club of Tasmania Inc.



Supported by

The Mineralogical Society of Tasmania

Present

## **The Hobart Gem and Mineral Spectacular 2010** **Tasmania's Hidden Treasures**

**Saturday 10<sup>th</sup> April 11.00 am – 5.00 pm**

**Sunday 11<sup>th</sup> April 10.00 am – 4.00 pm**

**BOARDWALK GALLERY – WREST  
POINT.**

**Jewellery, Gemstones, Crystals, Displays, Fossils, Minerals Panning for  
real Gold and Sapphires,  
Raffles, Books, Demonstrations....and SALES.**

**Admission: Adults \$5 Children \$1**

For further information Ph. Rosemary Aheimer (03)62491408



**Volunteers from MST are needed for  
this event – please contact Ralph or  
Marnie**



# MURPHY'S LAWS OF MINERALS

---

Larry Rush (with permission)

## Laws of Shopping, Swapping, and Shows

**The Swappers First Rule of Trading – Any specimen received in any swap is less valuable than the one you traded.**

**The Swappers Second Rule of Trading – The value of specimens received in a mail swap is always exceeded by the cost of your postage.**

**The Swappers Third Rule of Trading – The frequency of specimen damage in the mail is directly proportional to the number of “FRAGILE” markings on the package.**

**Smitty's Sorrow – Your worst enemy's first place prize crystal on exhibit in your club's centennial show will be inferior to the one you decided not to show.**

**Willy's Woe – The specimen you have always wanted will be spotted (cheaply priced) on the dealer's table NEXT to the one where you just spent your last dollar.**

**Kevin's Rule – The other trader never needs what you have the most of to swap.**

**Laurie's Law – the impact of a dropped flat of specimens will do the worst damage to the best piece, and no damage to the worst piece.**

**Ben's Premise – The size and quality of verbally described crystals increases by a factor of two each time the collecting tale is told. (Also known as the Fisherman's Law).**

**Robert's Response – The listener's mind will compensate for Ben's Premise by decreasing by a factor of two for each collecting tale.**

**Fisher's Frustration – No one who is ever present ever wins a mineral show door prize.**

COMPILED BY LARRY RUSH. NEWSLETTER EDITORS ARE WELCOME TO USE ANY OF THIS CONTENT FOR THEIR CLUBS WITH PERMISSION. ALL MATERIAL HERE IS COPYRIGHTED. PLEASE DO NOT REPRINT OR REPRODUCE WITHOUT THE AUTHOR'S PERMISSION. CONTACT LARRY FOR RULES AND PROCEDURES FOR REPRINTING:

[larryrush@att.net](mailto:larryrush@att.net)

